

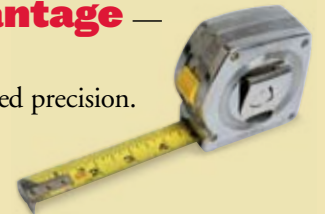
The Tale of the Tape



Install an ordinary drip tape and you'll be locked into ordinary results. That's because ordinary tapes can't affordably offer emitters spaced closer than 12 inches, *and* they may be more likely to plug.

But install premium drip tape — **Aqua-Traxx® with the PBX Advantage** — and you'll enjoy extraordinary results and durability. So, what's the PBX Advantage? Unmatched precision.

With options from 4 to 24 inches, you can select the emitter **spacing and flow**



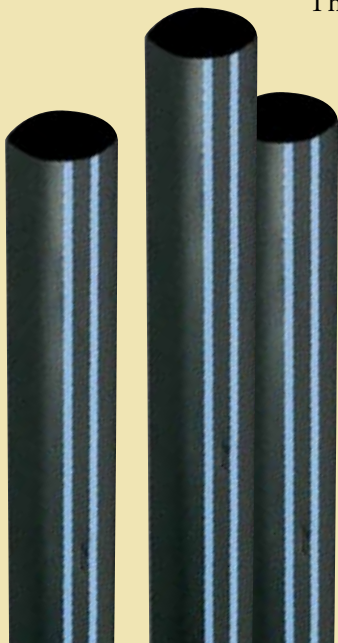
rates that work best for your soil type, crop and application needs.



Plus, the advanced flowpath design helps reduce clogging, so you'll worry less

about plants going thirsty. **Precise. Efficient. Practical.** That's the PBX Advantage.

That's the tape you want. *Ask us for more details or visit toromicroirrigation.com*



Aqua-Traxx®
with the **PBX Advantage**



Count on it.

Aqua-Traxx®

with the **PBX Advantage**

Premium Drip Tape with Unmatched Precision

Precision

- Emitter spacing options from 4 to 24 inches
- Flow rates that match your soil type
- Accurately delivers water, fertilizer and chemicals

Uniformity

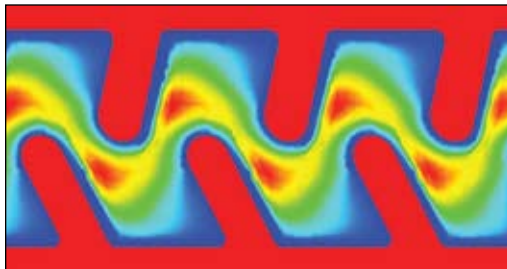
- Advanced flowpath design ensures accurate delivery of water from every emitter
- Best-in-class coefficients of variation (Cv's) — below 3 percent

Durability

- Seamless construction provides maximum strength
- Premium materials provide ultra-high strength and flexibility

Plugging Resistance

- Extra-large cross-sectional area helps prevent clogging
- PBX flowpath requires only 140-mesh filtration for most flow rates



The Proportionally Balanced Cross-Section (PBX) design optimizes flowpath turbulence to effectively manage water flow, deliver uniform distribution and reduce clogging.

Toro Irrigation Solutions

PRECISE. EFFICIENT. PRACTICAL.

The Toro Company
Micro-Irrigation Business
1588 N. Marshall Avenue, El Cajon, CA 92020-1523, USA
Tel: +1 (800) 333-8125 or +1 (619) 562-2950
Fax: +1 (800) 892-1822 or +1 (619) 258-9973

toromicroirrigation.com

ALT046-1 11/08

Flow Rates

Available in 4, 5, 6, 8, 10, 12 & 15 mil Tape

Part Number	Outlet Spacing (in.)	Individual Emitter Flow Rate (gph)		Q-100 (gpm/100 ft.)		Filtration Requirement
		@ 8 psi	@ 10 psi	@ 8 psi	@ 10 psi	Mesh
0.07 Emitter		gph/Emitter		gpm/100 ft.		200
EAXxx0817	8	.07	.08	.17	.20	
EAXxx1608	16	.07	.08	.08	.10	
0.09 Emitter		gph/Emitter		gpm/100 ft.		200
EAXxx0822	8	.09	.10	.22	.25	
0.10 Emitter		gph/Emitter		gpm/100 ft.		200
EAXxx0825	8	.10	.11	.25	.28	
0.13 Emitter		gph/Emitter		gpm/100 ft.		140 NEW
EAXxx0467	4	.13	.15	.67	.75	
EAXxx0834	8	.13	.15	.34	.37	
EAXxx1222	12	.13	.15	.22	.25	
EAXxx1617	16	.13	.15	.17	.19	
EAXxx2411	24	.13	.15	.11	.12	
0.15 Emitter		gph/Emitter		gpm/100 ft.		140 NEW
EAXxx0650	6	.15	.17	.50	.56	
EAXxx1225	12	.15	.17	.25	.28	
0.20 Emitter		gph/Emitter		gpm/100 ft.		140 NEW
EAXxx04100	4	.20	.23	1.00	1.12	
EAXxx0667	6	.20	.23	.67	.75	
EAXxx0850	8	.20	.23	.50	.56	
EAXxx1234	12	.20	.23	.34	.38	
EAXxx1625	16	.20	.23	.25	.28	
EAXxx2417	24	.20	.23	.17	.19	
0.27 Emitter		gph/Emitter		gpm/100 ft.		140 NEW
EAXxx04134	4	.27	.30	1.34	1.50	
EAXxx0867	8	.27	.30	.67	.75	
EAXxx1245	12	.27	.30	.45	.50	
EAXxx1634	16	.27	.30	.34	.38	
EAXxx2422	24	.27	.30	.22	.25	
0.34 Emitter		gph/Emitter		gpm/100 ft.		140 NEW
EAXxx0884	8	.34	.37	.84	.94	
EAXxx1256	12	.34	.37	.56	.62	
EAXxx1642	16	.34	.37	.42	.47	
EAXxx2428	24	.34	.37	.28	.31	

NOTE: X – denotes the diameter. 5 for 5/8", 7 for 7/8" and 11 for 1-3/8" xx – denotes mil thickness.

Wall Thickness	Pressure (psi)		Reel Length (ft.)	Reel Weight (lbs.)	Diameter
	Min	Max			
4 mil	4	8	15,000	64	5/8"
5 mil	4	10	13,000	74	
6 mil	4	12	10,000	64	
8 mil	4	15	7,500	66	
10 mil	4	15	6,000	63	
12 mil	4	15	5,100	63	
15 mil	4	15	4,000	63	7/8"
6 mil	4	10	7,380	68	
8 mil	4	15	6,000	72	
10 mil	4	15	4,400	71	
12 mil	4	15	4,000	72	
15 mil	4	15	3,000	66	
15 mil	4	15	2,700	87	1-3/8"

TORO

Count on it.